

# ColocANA

the colocalization  
analysis procedure



# ColocANA

Automates the colocalization analysis procedure

-----

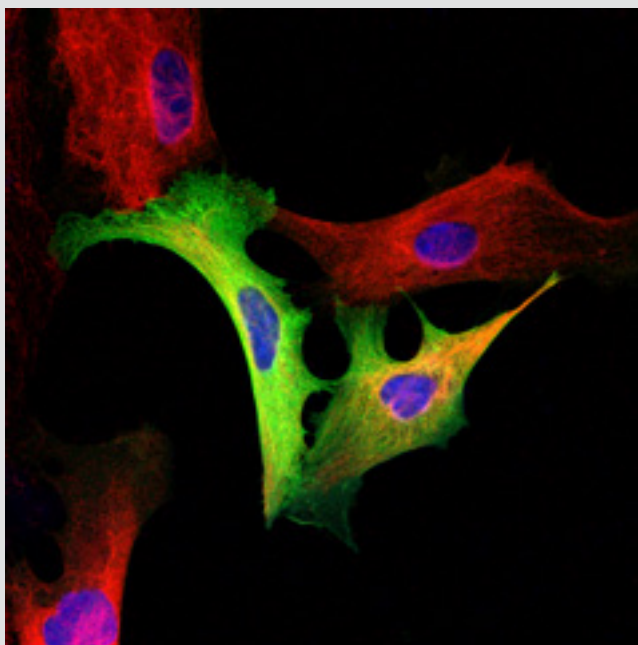
The laser scanning confocal microscope (LSCM) and CCD camera generates images of multiple labelled fluorescent samples. Colocalization of fluorescent labels is frequently examined. Use ColocANA software to automate the colocalization procedure and to exclude the biased estimations resulting from visual inspections of images. ColocANA automatically imports confocal or other microscopic images and calculates colocalization at several thresholds.

As a result, count of pixels above several threshold levels in any number of images is saved in an ASCII file. In addition Pearson's r correlation coefficient is calculated for fluorescence intensities in both confocal channels. Using ColocANA, quick quantitative analysis of colocalization of hundreds of images is possible. In addition, such automated procedure is not biased by the examiner subject visualization.

-----

## Reference:

**Kreft M, Milisav I, Potokar M, Zorec R. Automated high through-put colocalization analysis of multichannel confocal images. Comput Methods Programs Biomed. 2004;74(1):63-7.**





**celica**biomedical

Tehnološki park 24, SI-1000 Ljubljana, Slovenia

Tel. +386 (0)1 544 3604

Fax: +386 (0)1 534 70 36

e-mail: [office@celicabiomedical.com](mailto:office@celicabiomedical.com)

[www.celicabiomedical.com](http://www.celicabiomedical.com)

---

Ljubljana, January 2014.